

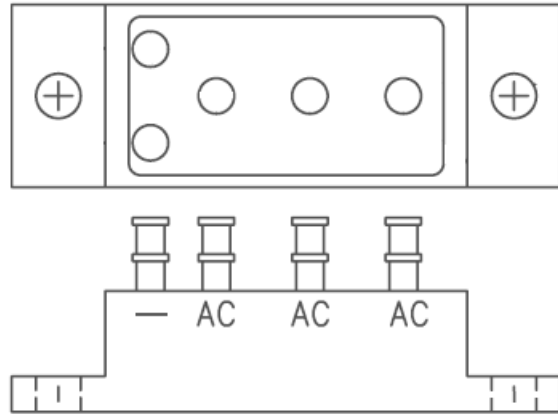


180 Lafayette Road  
 North Hampton, NH 03862-2448  
 PH: 603-964-3165  
 FX: 603-964-3168  
 WWW.PDEELECTRONICS.COM

**Rectifier Assembly**  
 25 Amp Three Phase Bridge  
 483-1, 483-2, 483-3

**FEATURES**

- High Rel Screen Available
- Glass Passivated Diodes Used
- Controlled Avalanche Characteristics
- High Surge Rating
- Electrically Isolated Aluminum Case
- MIL-PRF-19500 Similarity



**ABSOLUTE MAXIMUM RATINGS**

Average DC Output Current ( $T_C=55^\circ\text{C}$ ).....	25Amps
Average DC Output Current ( $T_C=100^\circ\text{C}$ ).....	18.5Amps
Maximum Surge Current (8.3mS, half sine, $T_J=55^\circ\text{C}$ ).....	150 Amps
Storage and Operating Temperature.....	$-65^\circ\text{C}$ to $150^\circ\text{C}$
Maximum Thermal Resistance (junction to case).....	$2.5^\circ\text{C/W}$ typical
Mounting Torque.....	15.0 in/lb max (6-32 Screw)
Weight.....	1.0 oz (30 g) typical

**ELECTRICAL CHARACTERISTICS**

Device	PIV Per Leg	Max Forward Voltage Per Leg $I_{FM}=39A$	Max Reverse Leakage Current Per Leg		Average Output Current		Max Reverse Recovery Time	Max Isolation Voltage @2800V
			$\mu A$		A			
			$T_J=25^\circ\text{C}$	$T_J=100^\circ\text{C}$	$T_C=55^\circ\text{C}$	$T_C=100^\circ\text{C}$		
483-1	200	1.3*	2	200*	25	18.5	2.0**	10***
483-2	400				$T_C=55^\circ\text{C}$	$T_C=100^\circ\text{C}$		
483-3	600				$T_C=55^\circ\text{C}$	$T_C=100^\circ\text{C}$		

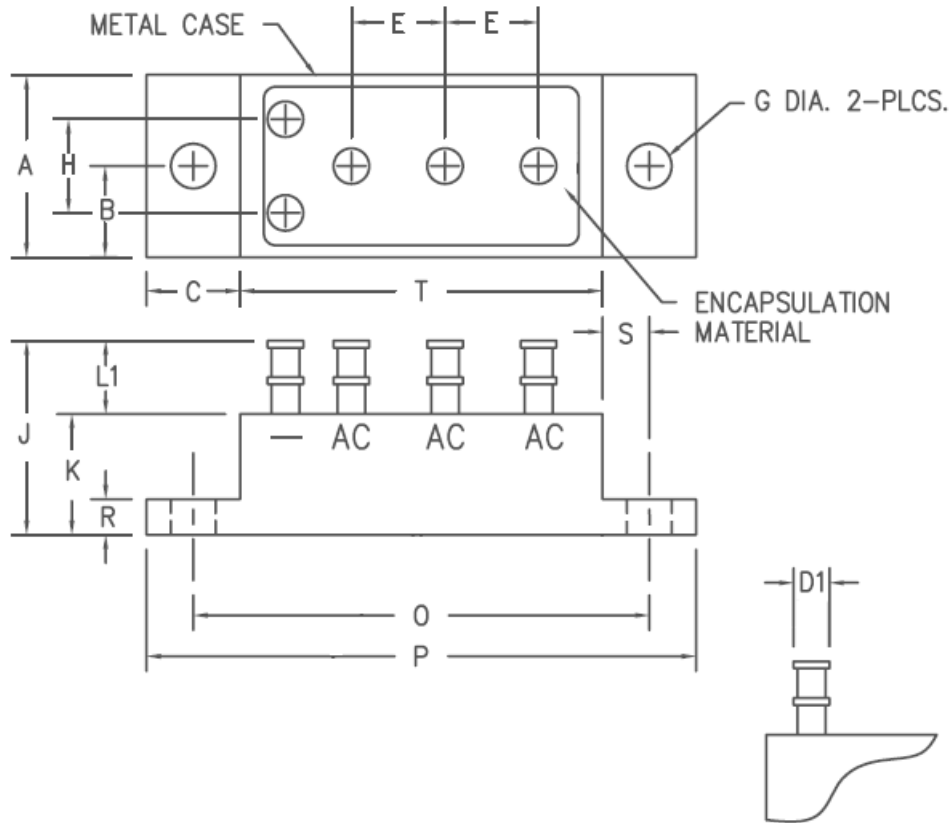
\*PW = 300 $\mu$ S, duty cycle  $\leq$  2%  
 \*\*  $I_F=0.5A$ ,  $I_R=1.0A$ ,  $I_{rec}=0.25A$ , measured on discretes prior to assembly  
 \*\*\*Measured for 10 seconds minimum



180 Lafayette Road  
 North Hampton, NH 03862-2448  
 PH: 603-964-3165  
 FX: 603-964-3168  
 WWW.PDEELECTRONICS.COM

## Rectifier Assembly

25 Amp Three Phase Bridge  
 483-1, 483-2, 483-3



Dim.	Inches		Notes
	Minimum	Maximum	
A	.730	.770	
B	.355	.395	
C	.355	.395	
D1	.141	.151	typical
E	.355	.395	
G	.149	.189	
H	.355	.395	
J	---	.820	
K	.390	.510	
L1	.240	.320	
O	1.84	1.90	
P	2.22	2.28	
R	.090	.150	
S	.168	.208	
T	1.47	1.53	

Specifications subject to change without notice to ensure a better product  
**PD&E Electronics** 180 Lafayette Rd. North Hampton, NH 03862  
 Ph: (603) 964-3165 Fx: (603) 964-3168 Web: WWW.PDEELECTRONICS.COM